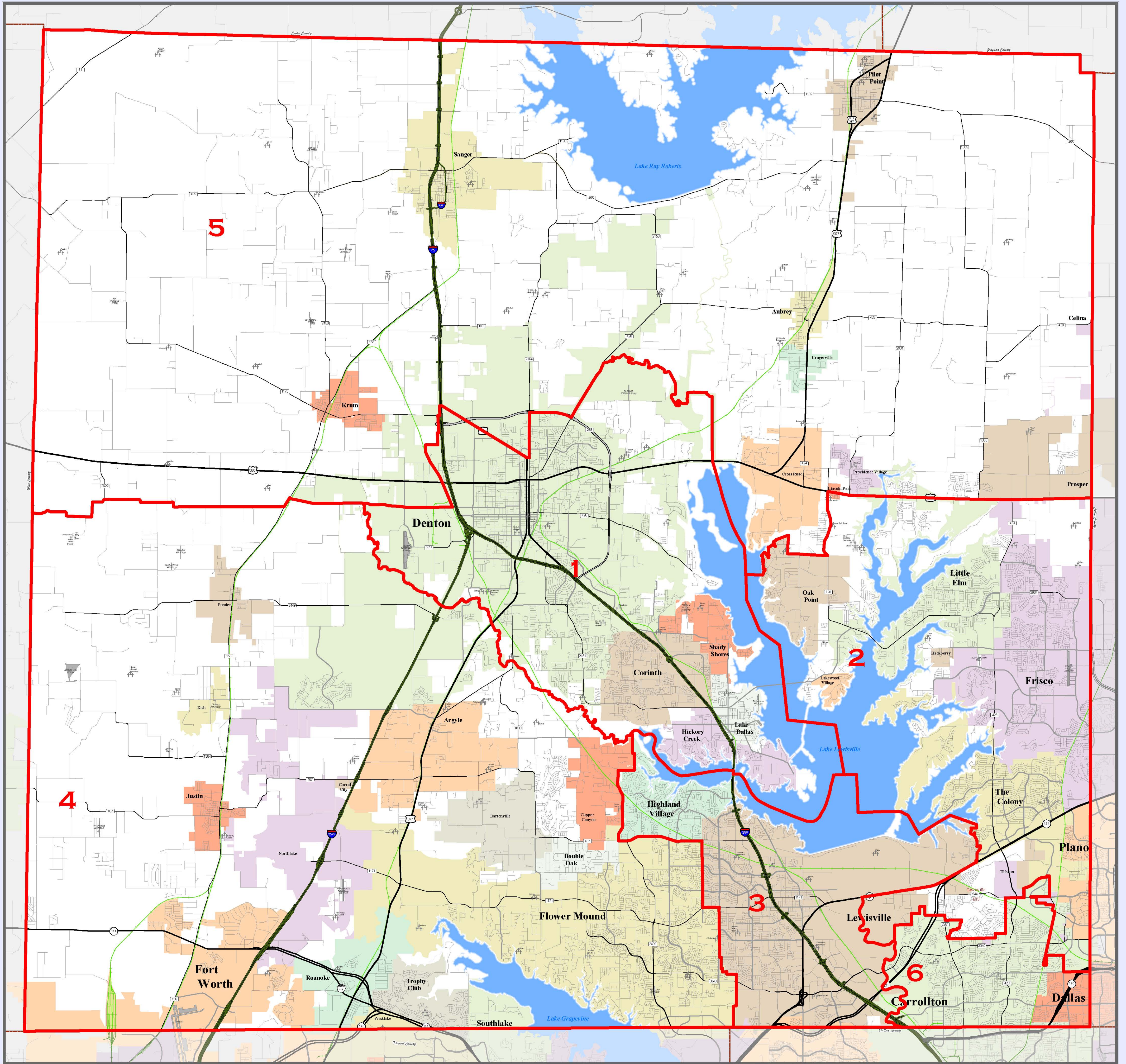


DENTON COUNTY



Mary Horn- County Judge
 Hugh Coleman- Commissioner Precinct 1
 Ron Marchant- Commissioner Precinct 2
 Bobbie J. Mitchell- Commissioner Precinct 3
 Andy Eads- Commissioner Precinct 4

INTERSTATE	MINOR ROADS
U.S. HIGHWAY	CEMETERY
STATE HIGHWAY	RAILROADS
FARM TO MARKET	STREAMS
MAJOR THOROUGHFARES	LAKES AND PONDS
	AIRPORTS

City Population
 Denton > 100,000
 Lewisville 40,000- 100,000
 Corinth 10,000- 39,999
 Sanger 2,000- 9,999
 Ponder < 2,000

NAD 1983 StatePlane
 (Zone 5351)
 Texas North Central
 Lambert Conformal Conic

1 inch = 1.5 miles
 August 2010

THIS MAP AND/OR DATA WAS PREPARED BY DENTON COUNTY FOR ITS USE AND MAY BE REVISED AT ANY TIME WITHOUT NOTIFICATION TO ANY USER.

DENTON COUNTY DOES NOT GUARANTEE THE CORRECTNESS OR ACCURACY OF ANY FEATURES ON THIS MAP AND ASSUMES NO RESPONSIBILITY IN CONNECTION THEREWITH.

CONTACT INFORMATION
 LANDMARKMAP IMS: gis.dentoncounty.com
 E-MAIL: gis@dentoncounty.com

